



KudosMap7+

User Manual

[Shen Zhen Kudos Digital Company Limited](#)

www.kudosmap.com

Table of Content

1.	Welcome to KudosMap7+.....	3
1.1	Precautions.....	3
1.2	Introduction to KudosMap7+.....	3
2.	Getting Started.....	5
2.1	Quick Reference.....	5
2.2	Getting Started.....	6
2.3	Navigation Maps.....	7
2.4	Keyboards.....	8
3.	Selecting a destination.....	9
3.1	One touch to go.....	9
3.2	Quick Search Entry.....	10
3.3	Go To Entry.....	10
3.4	Set Destination.....	11
3.4.1.	Search a destination by Address.....	11
3.4.2.	POI Search near Current Position.....	16
3.4.3.	POI Search in City.....	17
3.4.4.	POI Search by Phone No.....	18
3.4.5.	Select a destination in Address Book.....	20
3.4.6.	Select a destination in Recent Destinations.....	20
3.4.7.	Select a point on map as destination.....	21
3.4.8.	Search a destination by Coordinates.....	21
3.4.9.	Go Home.....	22
4.	Route Plan.....	23
4.1	Destination Management.....	23
4.1.1.	Add or delete destination(s).....	23
4.1.2.	Change the sequence of destination.....	23
4.1.3.	Change the starting point.....	24
4.2	Route Options.....	24

4.3	Select Navigation Mode.....	25
5.	Navigation.....	26
5.1	Visual Options.....	27
5.1.1	Navi Visual.....	27
5.1.2	Map Visual.....	27
5.2	Route Information.....	27
5.3	Route Plan.....	28
5.4	Detour.....	28
5.5	Terminate.....	29
5.6	Continue last navigation.....	
5.7	Auto-routing.....	29
6.	Settings.....	29
6.1	Language.....	30
6.2	Safety Alert.....	30
6.3	Set home.....	31
6.4	Address Book.....	31
6.5	Trace Record.....	32
6.6	GPS Status.....	33
6.7	Volume.....	34
6.8	Regional.....	34
6.9	Day/Night Mode.....	34
6.10	Demo.....	35
6.11	About.....	35
7.	Appendix.....	35
7.1	Attention.....	35
7.2	POI Icons.....	37
7.3	Copyright notices.....	38

1. Welcome to KudosMap7+

Thank you for choosing KudosMap7+ as your global in-car navigator. This manual is a detailed description of the navigation software. Though you can easily learn to use it and we still recommend you to read this manual to understand screens and operation steps of KudosMap7+.

1.1 Precautions

For your safety concern, we recommend that you operate KudosMap7+ before start of journey. Do not operate KudosMap7+ while driving as this might lead to collision or damage. Please ask your passenger to operate it if necessary.

Local driving regulations and driving conditions have to be observed all the time. They have precedence over the driving instructions given by KudosMap7+.

Although all safety considerations have been taken into account while designing the KudosMap7+, the use of this software “provided by KudosMap7+” is not warranted against the accident or the consequences of any.

1.2 Introduction to KudosMap7+

KudosMap7+ has the following features:

- **Enhanced Overall Quality**

KudosMap7+ is designed to enhance its quality of map display, route calculation, human-computer interaction, and resource consumption. The enhancement comes from the redefinition of electronic map navigation software’s each functional module. KudosMap7+ team adopts meticulous research and development method and establishes comprehensive and rigorous testing standard and regulation, operating by the regulations of product lifecycle management and project management. Enhancement of product quality is the primary goal in the process of product design, research, test, release, and so on.

- **Optimized Overall Performance**

Compared to other oversea versions, KudosMap7+ improves 50% in route

calculation efficiency, 30% in map display efficiency, while 10% decrease in RAM consumption. The innovative new engine algorithm and new product architecture make an overall optimization of KudosMap7+ product performance.

- **Smoother Human-Computer Interaction**

KudosMap7+ human-computer interaction is redesigned to simplify operation steps so as to make navigation operation smoother in the process of driving. With the new features of junction view, camera alert, lane information and so on, KudosMap7+ guarantees driving safety, convenience, and smooth.

- **Visualized 3D Junction View**

KudosMap7+ integrates numerous junction views. Unlike other navigation softwares, KudosMap7+ provides a clear and visualized view of winding overpasses, roundabouts, viaducts and other complicated road junctions in big cities. Accordingly, KudosMap7+ guarantees that you can clearly and visually discern conditions of complicated junctions to avoid detours as well as adds a practical and eye-friendly navigation effect.

- **Practical Camera Alert**

KudosMap7+ pre-provides numerous camera alerts including red light camera, speed camera, section start camera and section end camera with voice alert and sound alert, according to driving speed and road conditions. KudosMap7+ guarantees driving safety and eliminates the concern of to be fined for overspeeding or other reasons. KudosMap7+ makes you more relax during driving.

- **Convenient Signpost**

KudosMap7+ pre-provides visualized and vivid signpost including detailed road information (driving direction and turn information) of the next intersection with the effects of shaded display and day/night switch, according to driving speed and the route of advance. KudosMap7+ makes you master road conditions and the next lane regulation in advance, and inspires your confidence in arriving destinations smoothly when driving on unfamiliar road sections.

- **Detailed Lane Information**

KudosMap7+ pre-provides the lane information including the exit, overpass, roundabout, viaduct and other complicated road, according to driving speed and the route of advance. KudosMap7+ supports split screen and dynamic arrow guidance, making navigation and lane information show at the same time, and allowing you see the correct lane direction with a quick glimpse. KudosMap7+ is designed to provide a variety of convenience for you.

- **Humanized Continuous Turn Information**

KudosMap7+ pre-provides the current turn, the next turn, and the continuous turn information, according to driving speed and the route of advance. KudosMap7+ displays all the lanes turn information with the highlight and voice guidance of the current lane to avoid you driving on the wrong lane, arriving destination smoothly.

- **Multi Routing Styles**

KudosMap7+ adopts optimized route calculation to provide multi route planning including the shortest route, the quickest route, IQ route for you.

- **Localized Data Query**

KudosMap7+, a highly customized navigation software, can increase ways or rules of localized data query. Take PND navigation product distributed to Singapore for instance. Singapore zip-code and HDB can be added.

- **Abundant Extended POI**

KudosMap7+, an extensible navigation software, can extend POI data such as camera data, POI data from map industry customers to provide a diverse and unique navigation application, according to partners' PND marketing strategy or value-added services.

- **Fast and Flexible Customization**

KudosMap7+, a highly customized navigation software, can provide customized functional modules of high quality such as software interface, basic data, extended data and voice guidance, according to partners' PND marketing strategy or value-added services. KudosMap7+ can meet personalized requirements of the third party to expand marketing share in different regions.

On the whole, KudosMap7+ is electronic map navigation software with the features of enhanced product quality and performance, abundant product functions, eye- friendly interfaces and smoother human-computer interaction.

2. Getting Started

KudosMap7+ is a good choice for in-car navigation. You can easily use it by tapping the screen or drawing the map with your fingers.

2.1 Quick Reference





This chapter gives you a brief introduction of how to use KudosMap7+. Before we explore all the

detailed functionalities provided by this application, please make sure that:



- **KudosMap7+ searches for positioning information from at least three satellites and your position is fixed once the application starts.**

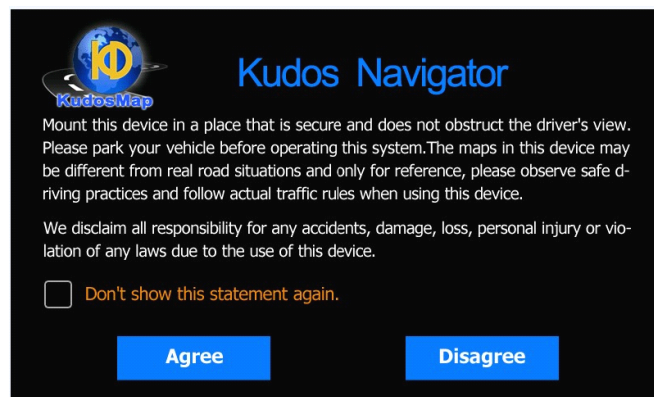
When you use the GPS receiver for the first time, it may take 2-3minutes to secure satellite information and orientate accurate position (Cold start). Your position fix is stored in the memory. For subsequent use of the GPS receiver, it will only take 1-3 minutes to locate your position (Warm start). Once your position is fixed by the GPS receiver, the system starts navigation immediately without any extra operation when you start the application.

Icons in the manual represents:

Icon	Description
	Operations need to be done.
	Enter the next interface.
	Two paralleled interfaces and can be switch back and forth.
	The current position is selected. In KudosMap7+, the selected country, city, road, list item or others will become blue magnified font.

2.2 Getting Started

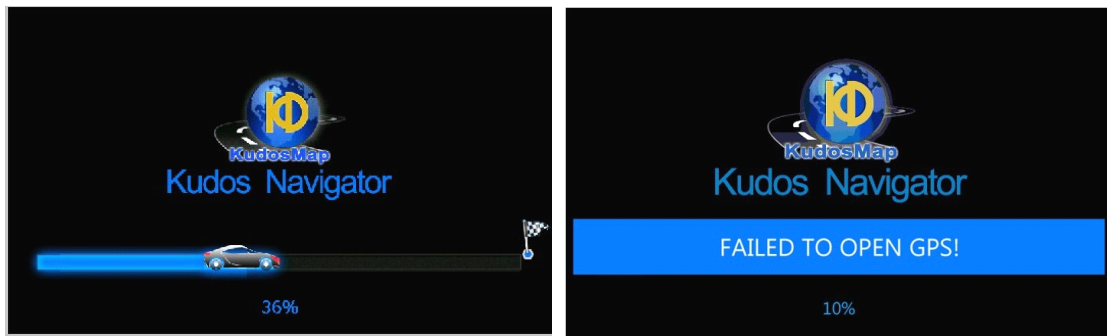
When start KudosMap7+ for the first time, system enters “*System Attention*” screen. Touch  system will enter “*Free Navi Map*”, touch  system will exit navigation application.



Tips: Mark “Don’t show this statement again” will not display the interface in the subsequent start-up.

It takes about 15s to automatically switch “*System Attention*” screen to “*Welcome*” Screen and

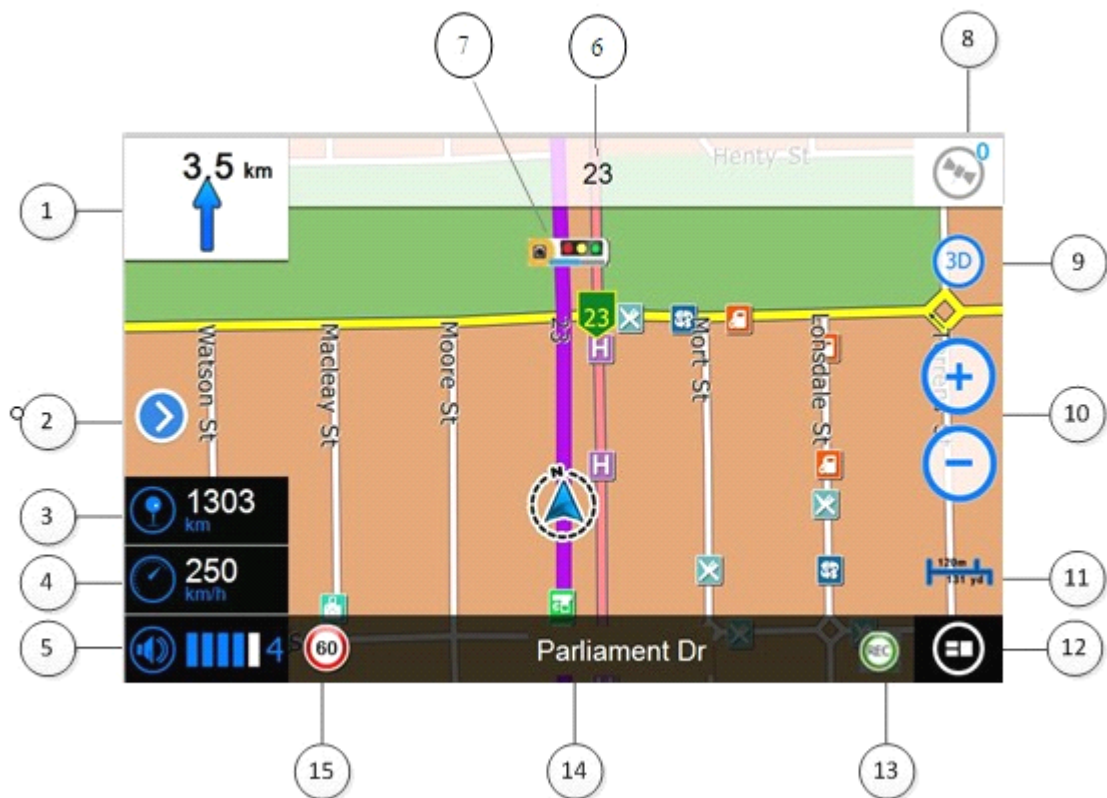
then enter "Free Navi Map".



Tips: If KudosMap7+ detects GPS error in the process of start-up, alert "Failed to open GPS!" will be displayed in "Welcome" screen.

2.3 Navigation Maps

Functions of each item in KudosMap7+ navigation map interface are as below:




1. **Turn information:** Display the next turn direction and the distance to the next turn. Display the next turn direction without the distance, if the distance is less than 250m.
2. **Split View Bar:** Retractable, default the split view bar is unfolded. After retraction, touch to restore to the default.

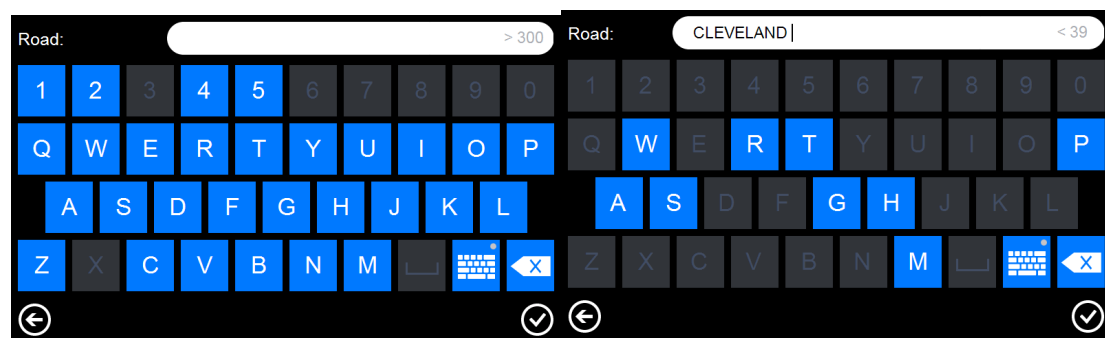
3. **Remaining Distance to the Destination:** Display the remaining distance to the destination.
4. **Current Speed:** Display the current speed.
5. **Current Time:** Display the current time.
6. **Next Road:** Display the name of the next approaching road.
7. **Speed Camera:** Display the different types of Camera.
8. **GPS Status:** Touch to view detailed GPS status.
9. **2D/3D Mode:** Touch to switch 2D/3D mode.
10. **Zoom in/out button:** Turn Auto Zoom on/off in *Visual Options*> *Navi Visual* interface.
11. **Scale Bar:** Turn Scale on Map on/off in *Visual Options*>*Map Visual* interface.
12. **Menu:** Touch to enter the main menu.
13. **Trace Record:** Trace record is working.
14. **Current Road:** Display the name of the current road.
15. **Speed Limit:** Display the speed limit.



2.4 Keyboards

KudosMap7+ keyboard has smart keystroke function and enables only those keys that can lead to a valid entry. It greatly improves the search efficiency.


You could input letters, numeric and punctuations. You can switch between English, Cyril and

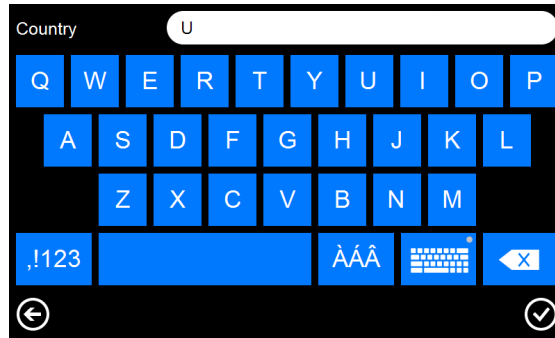
Greek keyboard by touch .

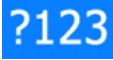



: Touch and return to high-level screen. : Confirm entry or select a record.


>300 : Indicates the number of results. : Touch and delete the last letter you entered.

: Space key. If the space key is unavailable it is gray.



: Touch to switch between the numeric and punctuation keyboard.

: Touch to change to the keyboards of special characters.

: Touch to change to the keyboards of different countries.

3. Selecting a destination

In order to navigate with KudosMap7+ or to plan a route, you have to enter a destination first and then calculate a route.

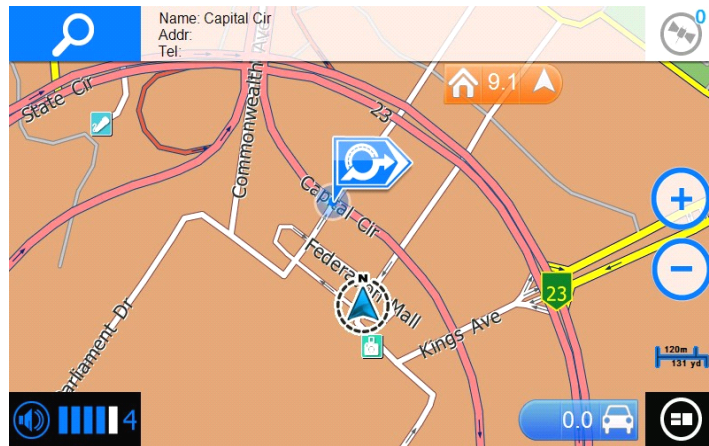
KudosMap7+ provides three ways of destination entry as below:


1. One touch to go.
2. Touch the quick search button in the map interface to enter different selections of destination.
3. Touch *Menu>Go To* button to enter different selections of destination.

3.1 One touch to go



KudosMap7+ supports you in selecting a point on map as destination to enter the navigation. Operation steps are as below:

Step1: In free navigation, browse map and select a point as destination;




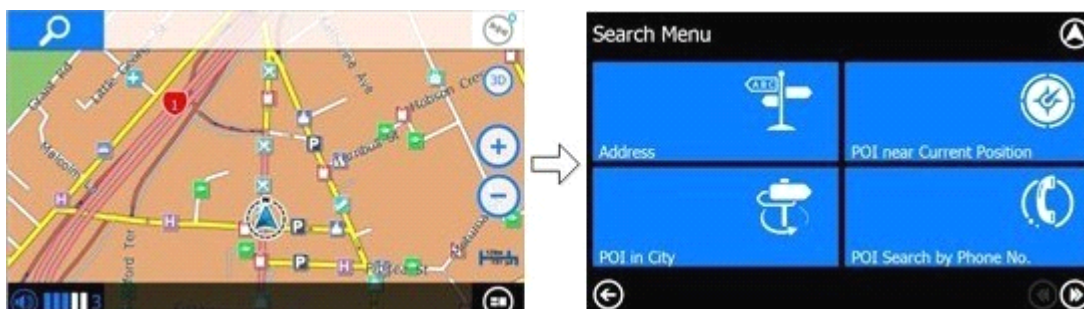
Step2: Touch “one touch to go” button  to enter route plan interface and navigate KudosMap7+.

Tips:


1.  Display the direction and distance of the current map center point to the current car icon. Touch to back to the current car icon interface immediately.
2.  Display the direction and distance of the current map center point to home. Touch to back to home interface immediately.

3.2 Quick Search Entry

In free navigation, KudosMap7+ supports you in touching quick search button  to enter “Search Menu” screen. Set destination in different ways is as below(Please refer to Chapter3.4):



3.3 Go To Entry

In free navigation, KudosMap7+ supports users in touching menu button  to enter “Main Menu” screen. Touch “Go To” to enter “Search Menu” screen. Set destination in different ways is as below(Please refer to Chapter3.4):



3.4 Set Destination

KudosMap7+ supports multi ways of setting destination.

3.4.1. Search a destination by Address

For example: No.12, Cleveland Avenue London, United Kingdom

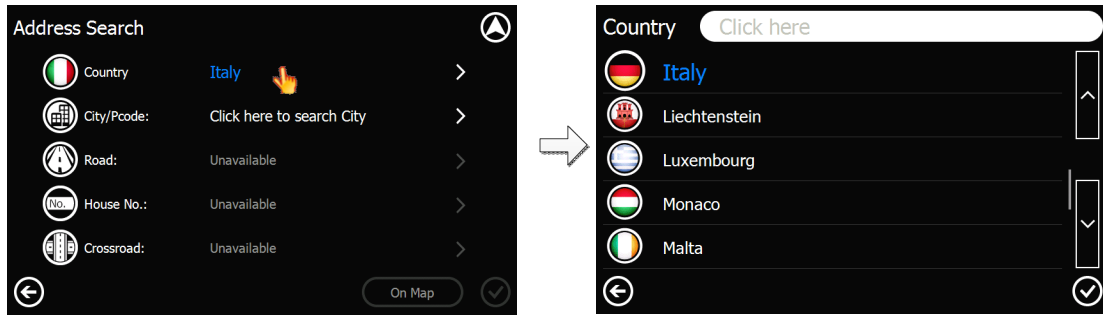
Step1: Touch *Search Menu*>*Address* to enter “Address Search” screen



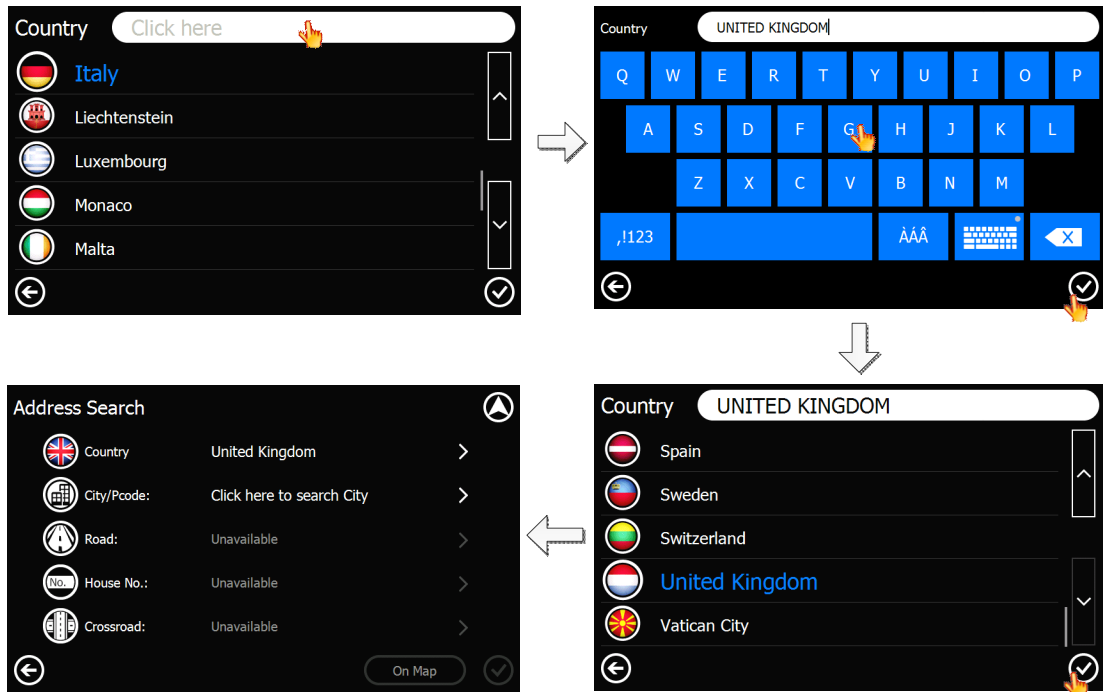
Step2: Country selection

1. For the first time, the item show “Click here to Search Country”;
2. The item will store the last selected country.

Touch country item to enter the country list and select.



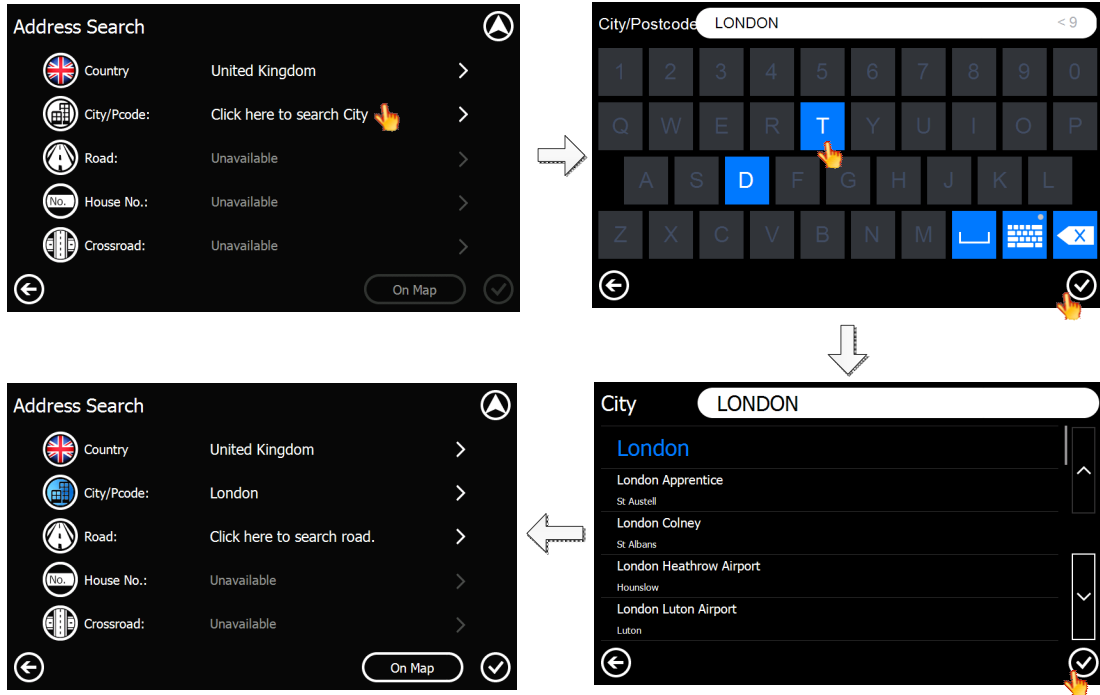
Tips: In country list interface, you can set destination by the following three ways: 1) Scroll the list and select the desired country; 2) Touch page turning button and select the desired country; 3) Enter the country name and select the desired country.



Step3: City Selection

1. For the first time, the item show “Click here to Search City”;
2. The item will store the last selected country.

Touch city item to enter city smart keyboard interface and input.

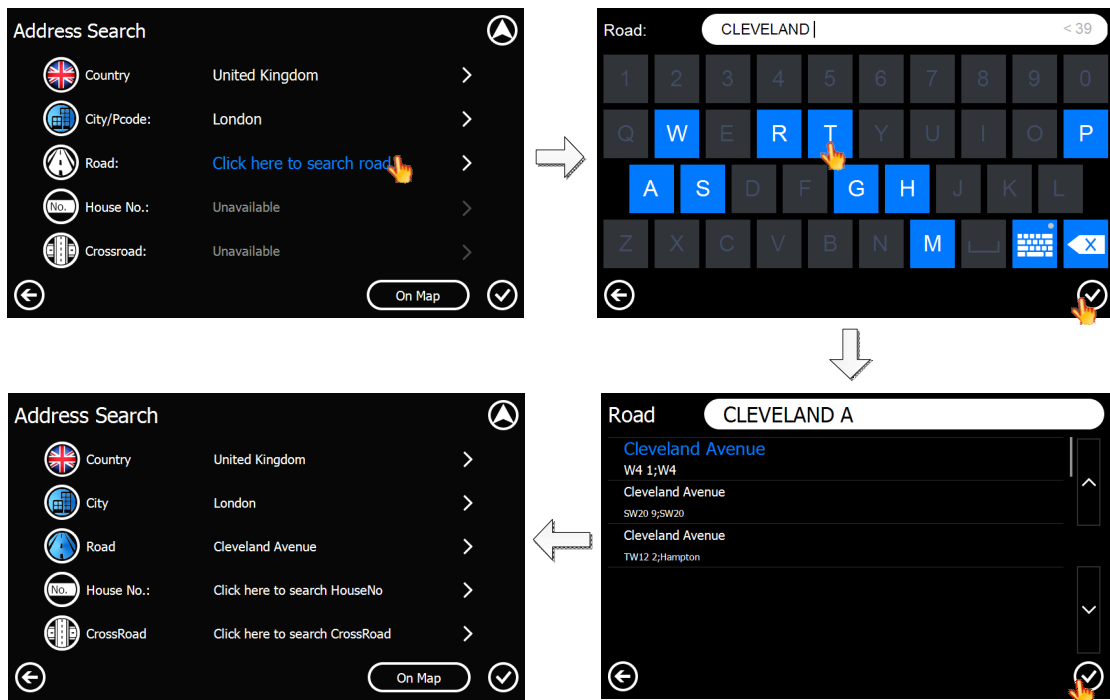


Tips: In city list interface, you can set destination by the following three ways: 1) Scroll the list and select the desired city; 2) Touch page turning button and select the desired city; 3) Enter the city name and select the desired city.

Tips: Touch the desired city and touch  to confirm the city selection. Touch  to navigate KudosMap7+.

Step4: Road Selection

Touch road to enter road smart keyboard interface. Input the road name or prefix and then return city list automatically once the navigation engine detects highly authentic roads.

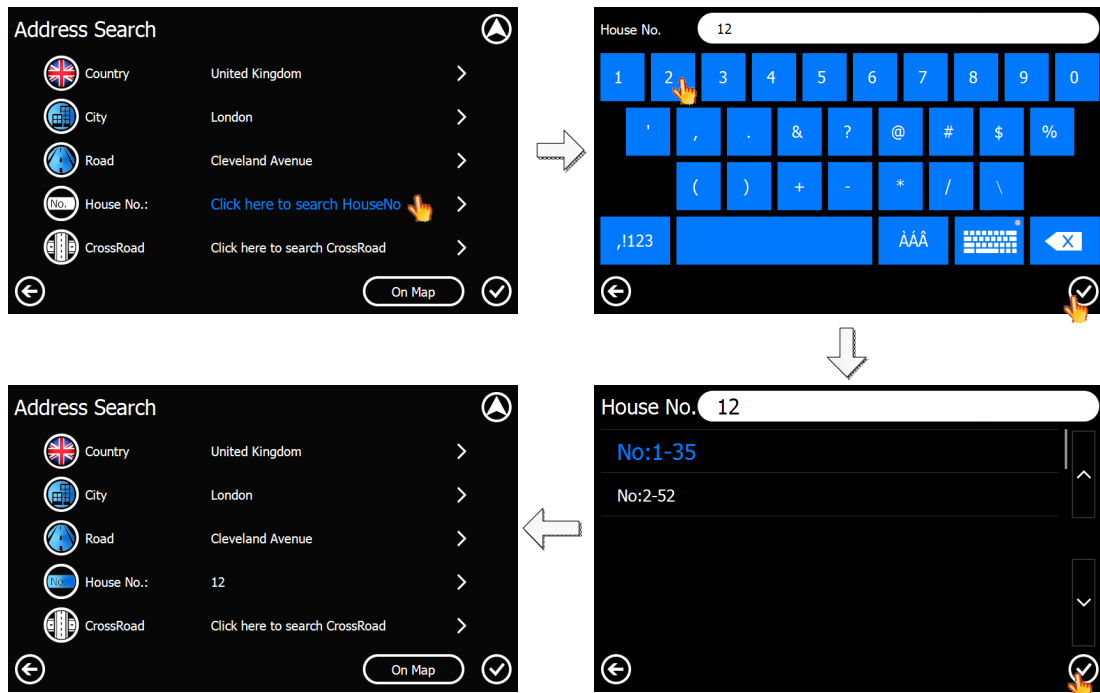


Tips: Touch the desired road and touch  to confirm the road selection. Touch  to navigate KudosMap7+.

Step5: House No. Selection

Once road selection is ok, you can set House No..

Touch House No. item to enter House No. interface and input.



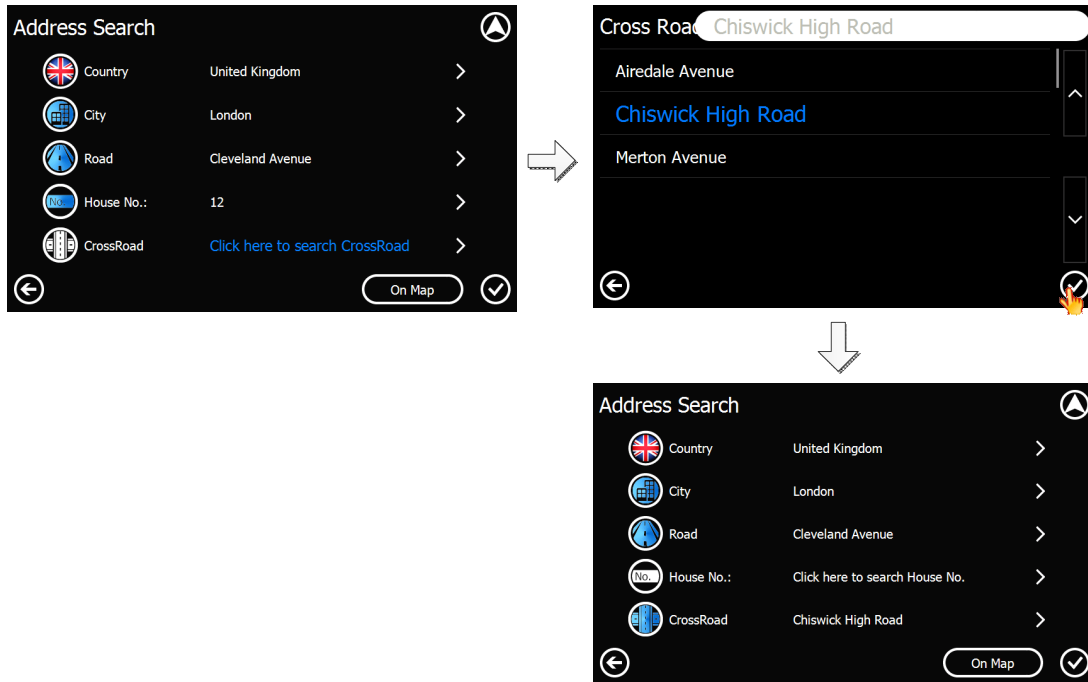
Tips: KudosMap7+ may provide a range of house no. rather than a concrete house no. for the reason of map data.

Tips: Touch the desired house no. and touch  to confirm house no. selection. Touch  to navigate KudosMap7+.

Step6: CrossRoad Selection


Once road selection is ok, you can set CrossRoad.

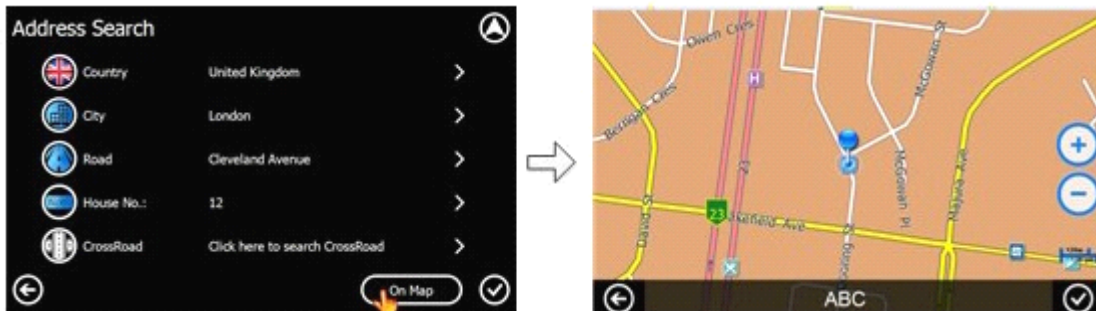
Tips: In some cases, you may need to specify the crossroad of the location. Need to mention that crossroad search disable house number search, vice versa.





Tips: Touch the desired crossroad and touch  to confirm crossroad selection. Touch  to navigate KudosMap7+.




Step7: Confirm the location of No.12, Cleveland Avenue London, United Kingdom

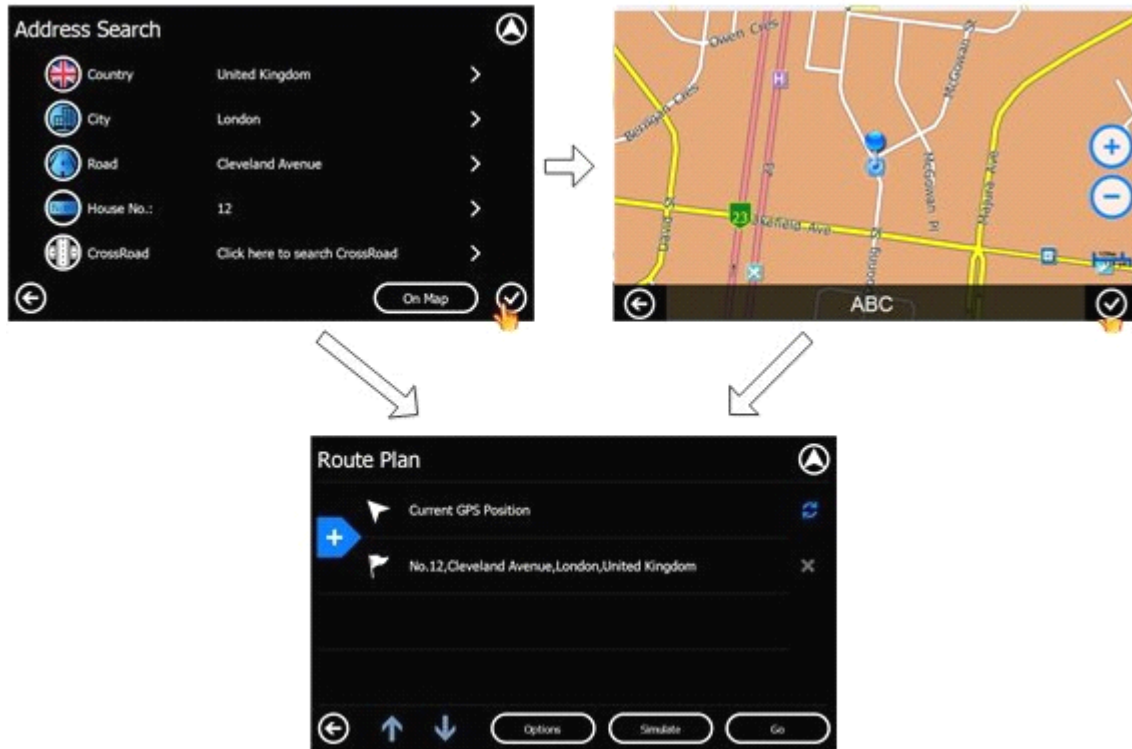
Touch  to confirm the specified location.



Touch  to back to "Address Search" screen and touch  to enter route plan screen.

Step8: Route Planning

Once City, Road, House No. or CrossRoad is specified, touch  to enter route plan screen. Or touch  to confirm the specified location and then touch  to enter route plan screen.



More operation details for “Route Plan” please refer to chapter 4.

3.4.2. POI Search near Current Position

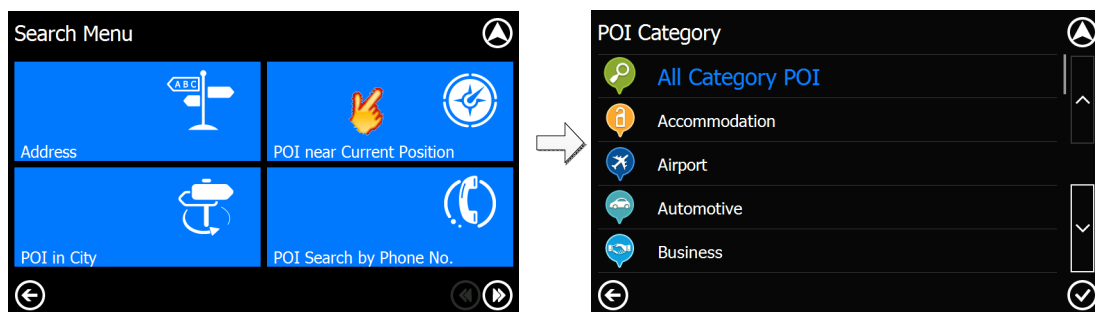
“POI Search near Current Position” displays 300 POIs at most around your current position from near to far.

Please notice that:

When GPS fixed, “current position” is the place where your vehicle locates.

When GPS does not fix, “current position” is the latest GPS-fixed place.

Step1: Touch *Search Menu*>*POI near Current Position* to enter “*POI Category*” screen

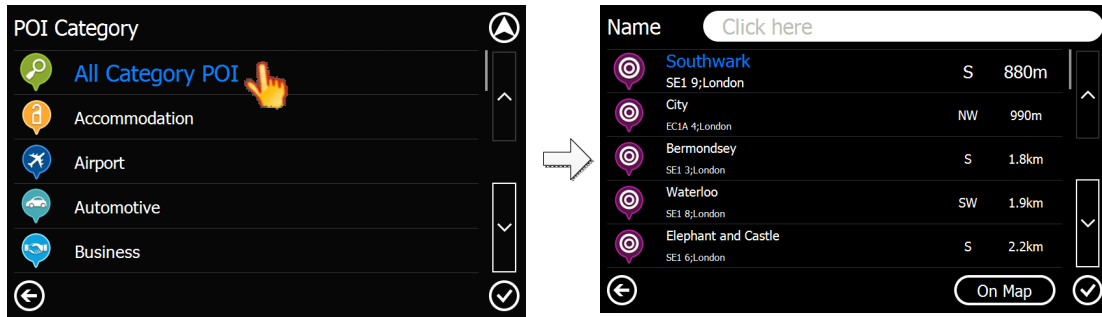


Step2: Select one POI category

In POI Category list, you can:

- a) Scroll the list and select one POI category.
- b) Touch page turning button and select one POI category.
- c) If you are not sure of the category, you can select “All Category POI”, then system will displays POIs of all categories near current position.

When you confirm the selection, touch  and system enters “Nearest POI list”.



Step3: Select a POI among results and touch  to enter “Route Plan” screen

In “Nearest POI List” screen, you could:

- a) Select the desired POI
- b) Touch keyboard to enter POI name or the prefix
- c) Check POI location on map

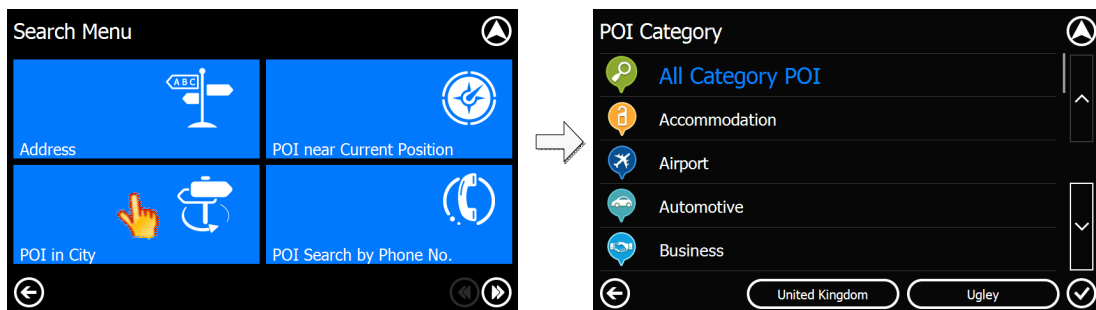
More operation details for “Route Plan” please refer to chapter 4.

3.4.3. POI Search in City

You can search POI in city by the way of Around Address.

For example: *London Biggin Hill Airport, London, United Kingdom*

Step1: Touch Search Menu>POI in City to enter “POI Category” screen



Step2: Country Selection

1. For the first time, country button will display “Country” to suggest you selecting one country;
2. The item will store the last selected country;

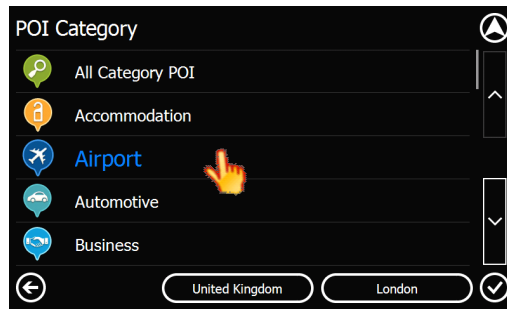
More operation details please refer to 3.4.1 step2 “Country Selection”.


Step3: City Selection

1. For the first time, city button will display “City” to suggest you selecting one city;
2. The item will store the last selected city;

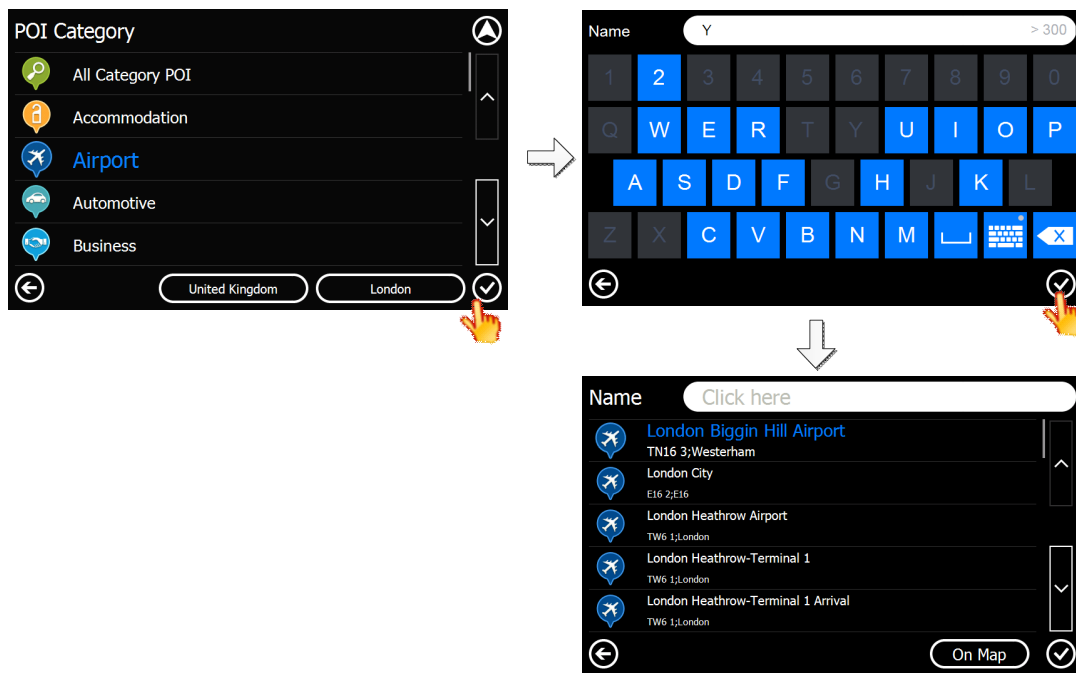
More operation details please refer to 3.4.1 step3 “City Selection”.


Step4: POI Category Selection



Select one POI category and Touch  button.

Step5: POI Search



In POI search interface, you can input POI name to search smartly, or Touch  directly to enter POI list and search by the following three ways: 1) Scroll the list and select the desired POI; 2) Touch page turning button and select the desired POI; 3) Input POI name and select the desired POI.

Step6: Select a POI among results and touch to enter “Route Plan” screen

In “POI List” screen, you could:

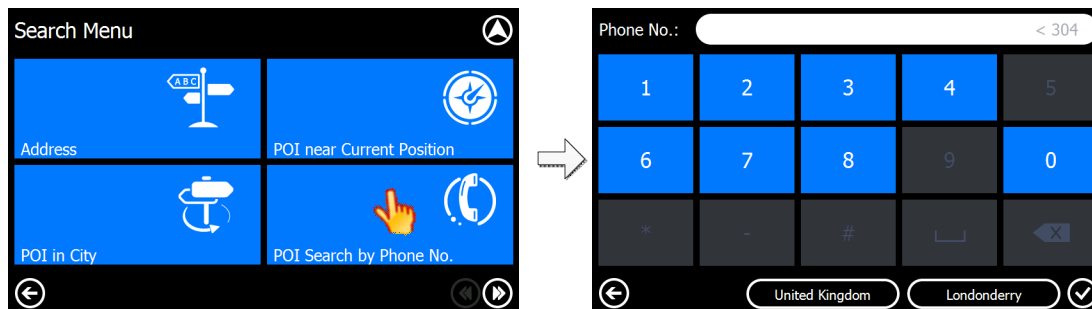
- a) Select the desired POI
- b) Touch keyboard to enter POI name or the prefix
- c) Check POI location on map

More operation details for “Route Plan” please refer to chapter 4.

3.4.4. POI Search by Phone No.

KudosMap7+ supports you in searching destination by phone no..

Step1: Touch *Search Menu*>*POI Search by Phone No.* to enter “Phone No.” input screen.



Step2: Country Selection

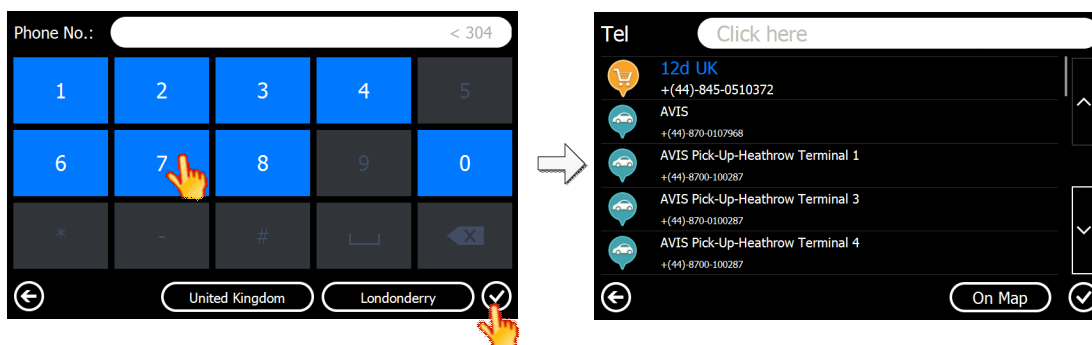
1. For the first time, country button will display “Country” to suggest you selecting one country;
 2. The item will store the last selected country;
- More operation details please refer to 3.4.1 step2 “Country Selection”.


Step3: City Selection

1. For the first time, city button will display “City” to suggest you selecting one city;
 2. The item will store the last selected city;
- More operation details please refer to 3.4.1 step3 “City Selection”.

Step4: POI Search by Phone No.

Input phone no. , touch  and return POI list.



You can touch  directly to enter POI list and search by the following three ways: 1) Scroll the list and select the desired POI; 2) Touch page turning button and select the desired POI; 3) Input phone no. and select the desired POI.

Step5: Select a POI among results and touch  to enter “Route Plan” screen

In “POI List” screen, you could:

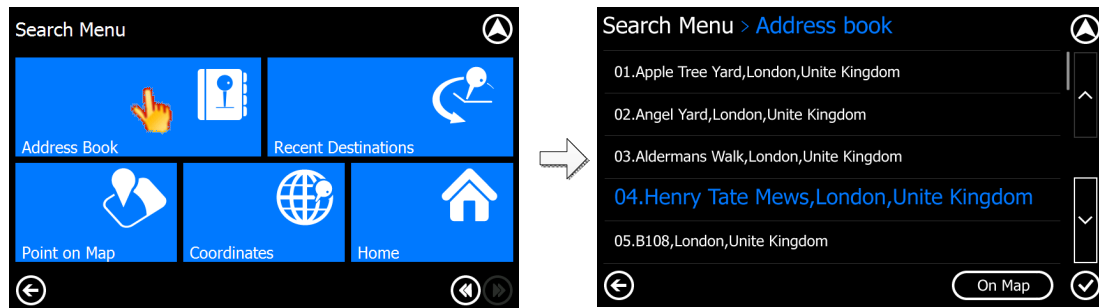
- a) Select the desired POI
- b) Touch keyboard to enter POI name or the prefix
- c) Check POI location on map

More operation details for “Route Plan” please refer to chapter 4.

3.4.5. Select a destination in Address Book


You can select a destination from Address Book and navigate KudosMap7+.

Step1: Touch *Search Menu*>*Address Book* to enter “*Address Book*” screen



You can select a destination by the following ways: 1) Scroll the list and select the desired destination; 2) Touch page turning button and select the desired destination.

Tips: When the record is empty, “*Address Book*” screen displays “No Record”.

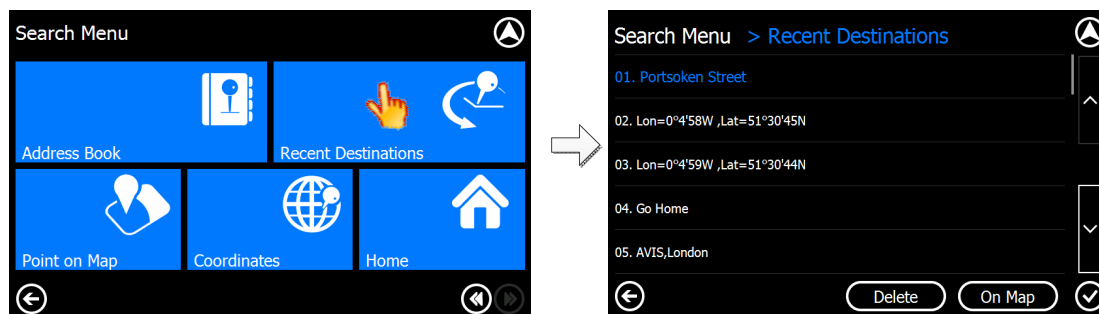
Step2: Select a *Address Book* record among results and touch  to enter “*Route Plan*” screen, or check *Address Book* location on map

More operation details for “Route Plan” please refer to chapter 4.

3.4.6. Select a destination in Recent Destinations

You can select a destination from Recent Destinations and navigate KudosMap7+.

Step1: Touch *Search Menu*>*Recent Destinations* to enter “*Recent Destinations*” screen



You can select a destination by the following ways: 1) Scroll the list and select the desired destination; 2) Touch page turning button and select the desired destination.

Tips: When the record is empty, “*Recent Destinations*” screen displays “No Record”.

Step2: Select a *Recent Destinations* record among results and touch  to enter “*Route Plan*” screen

In “Recent Destinations List” screen, you could:

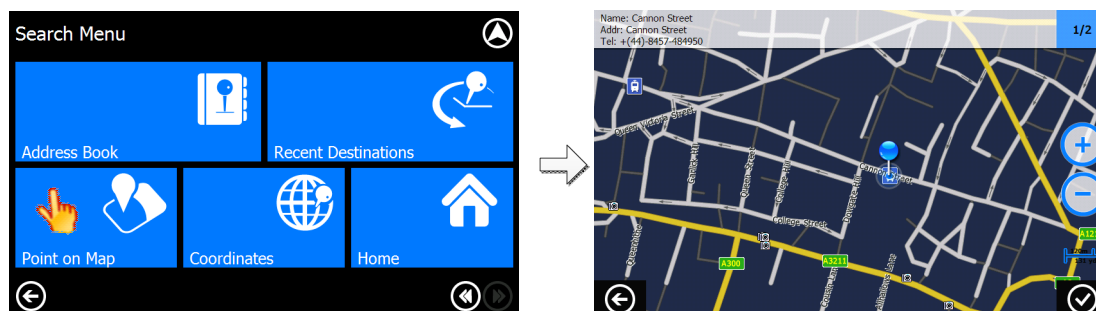
- Select one Recent Destinations record;
- Check Recent Destinations location on map;
- Delete one Recent Destinations record.

More operation details for “Route Plan” please refer to chapter 4.

3.4.7. Select a point on map as destination

KudosMap7+ supports setting a destination by scrolling the map to the desired location.

Step1: Touch *Search Menu*>*Point on Map* to enter map interface



Step2: Scroll the map and tap on one point on map;

On the “Map Search” screen, you can find places that you are interested in by zooming in/out or moving the map; meanwhile, you can touch the POI or road to view its information. You could touch 1/2 to check the other POI information if more than one POI is located at one point.

Step3: Touch  to enter “Route Plan” screen.

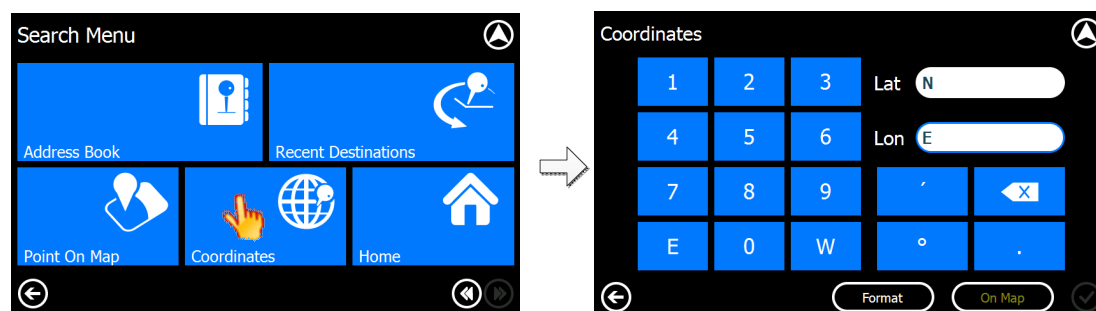
After you find your destination, touch  to add it as a destination. More operation details for “Route Plan” please refer to chapter 4.

3.4.8. Search a destination by Coordinates

If you know the geographic coordinates of your destination, you can navigation to the desired location by entering Coordinates.

Step1: Touch *Search Menu*>*Coordinates* to enter “Coordinates” screen

In the “Search Menu” screen, select “Coordinates” to enter the “Coordinates” input screen



Step2: Touch “Format” to change the type of coordinates

KudosMap7+ supports two kinds of coordinate format inputs: Degree Format and Digital Format.

You can touch the “Format” button to switch between these two formats.

In the Degree format, touch the “Lon” (Longitude) input area you should input “E” (East Longitude) or “W” (West Longitude) before you input the degree number of the longitude. Before inputting the degree number of the latitude, you should input “N” (North Latitude) or “S” (South Latitude).

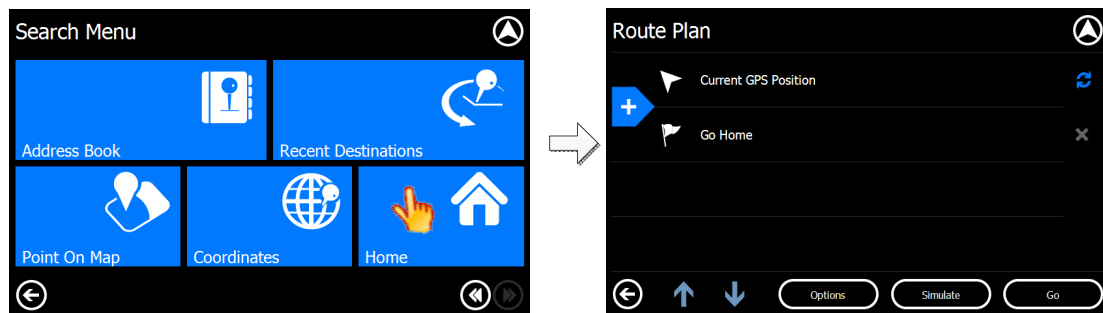
In the Digital format, you should input “-” (West Longitude/South Latitude) or “+” (East Longitude/North Latitude) before you input the digital number of the longitude or the latitude.

Step3: Enter the coordinates and touch  to enter “Route Plan” screen.

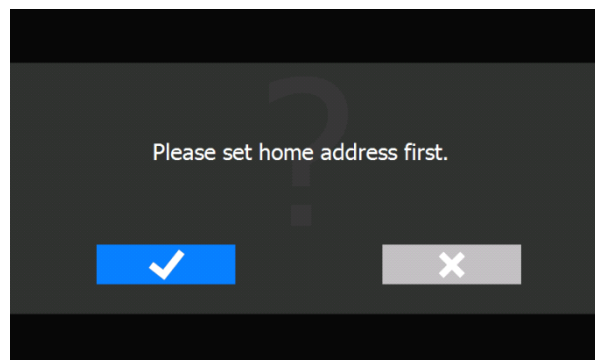
In coordinates screen, you could check coordinates location on map;
More operation details for “Route Plan” please refer to chapter 4.

3.4.9. Go Home

KudosMap7+ Navi System enables you to navigate directly to a specified home address in an easy and efficient way. In the “Search Menu”, select “Go Home” and the system will automatically start navigating to the position of My Home.



If the place of My Home has not been specified, when you touch “Go Home”, the system will prompt as Picture:



Touch “Yes”, the system enters “Search Menu” screen to set up home address. For operation details, please refer to chapter 3.4.

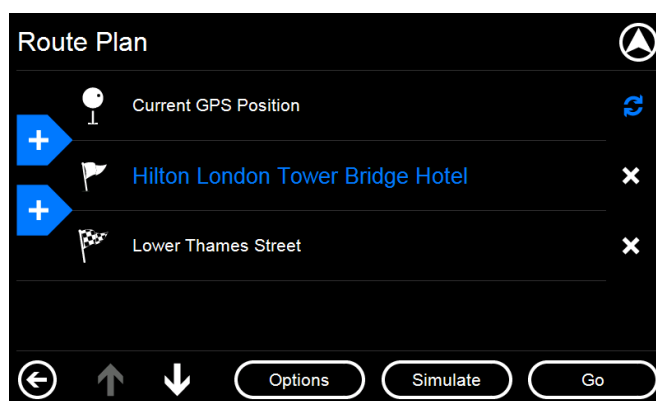
After specifying home address, system enter “Route Plan” screen. Please refer to chapter 4 for “Route Plan” operation details.

4. Route Plan

With KudosMap7+ you can enter the desired destination (as described in Chapter 3) and also specify how the route to be calculated.

KudosMap7+ enables three waypoints during navigation. The system calculates a proposed route according to the sequence of the waypoints you specified, and guides you to the final destination.

After you enter waypoints/destination, the system enter *"Route Plan"* screen. This chapter will describe all the functions of this screen.



4.1 Destination Management

4.1.1. Add or delete destination(s)

KudosMap7+ allows you to add up to three waypoints and destinations. Usually the starting point is the GPS-fixed current position and can only be modified.



: Touch it and enter *"Search Menu"* to search waypoint/destination (refer to Chapter 3).



: Touch it and the highlight waypoint/destination in blue is deleted.

4.1.2. Change the sequence of destination



: Touch it to move up the highlight waypoint/destination.



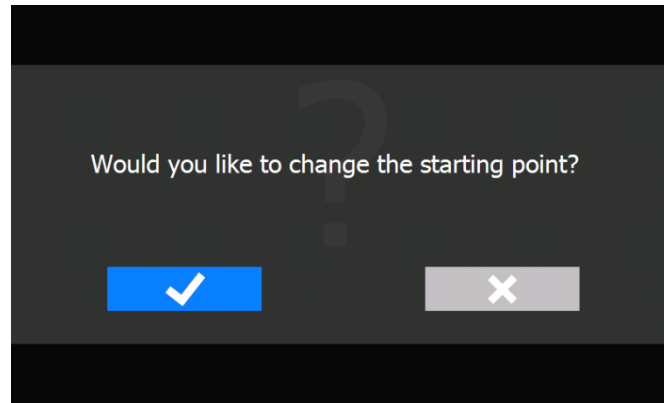
: Touch it to move down the highlight waypoint/destination.

Gray key means the function is disabled.

4.1.3. Change the starting point



: Touch it to change the starting point. When touch it, KudosMap7+ will prompt that would you like to change the starting point?




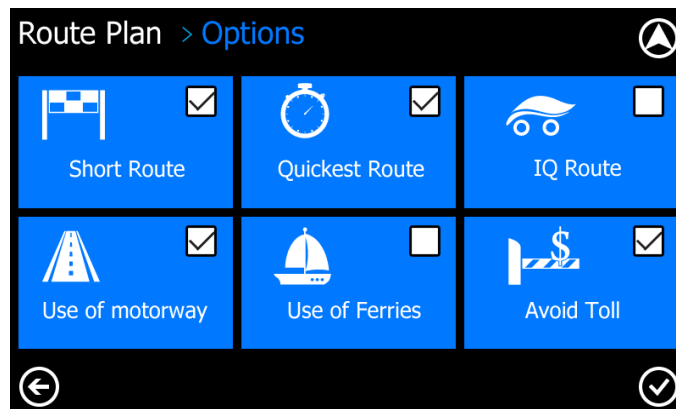
If yes, system will enter "Search Menu"(refer to Chapter 3).

If No, system will calculate the route.

4.2Route Options

KudosMap7+ offers you optimization settings of navigation. These settings are the basis parameters for calculating the route.

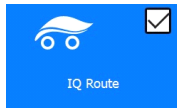
Touch  on "Route Plan" screen and enter "Route Options" screen.



KudosMap7+ enable user to select road type and routing style according to different navigation situations.

Routing style:

IQ Route: Route calculation based on the real average speeds measured on roads every day compared to speed limits. In the process of route planning, KudosMap7+ will automatically consider various factors which may affect drivers arriving destination such as traffic signs, steep slopes, traffic jam sections and so on(the real average speeds measured on these roads are lower.). IQ route depends on Traffic Pattern data provided by the third party



Use of IQ Route;

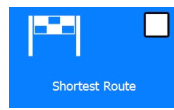


Non-use of IQ Route

Shortest Route: The shortest distance between the starting point and the destination.

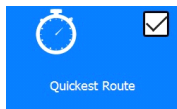


Use of Shortest Route;



Non-use of Shortest Route

Quickest Route: The shortest arrival time between the starting point and the destination.



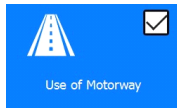
Use of Quickest Route;



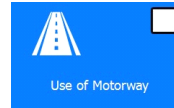
non-use of Quickest Route

Tips: Users must choose one routing style at least.

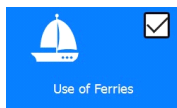
Road type:



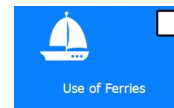
Most Use of Motorway;



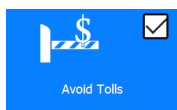
Least Use of Motorway



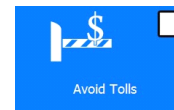
Most Use of Ferries;



Least Use of Ferries



Avoid Toll Roads;



Allow toll roads

Tips: Users can choose any road type or cancel all.

4.3 Select Navigation Mode

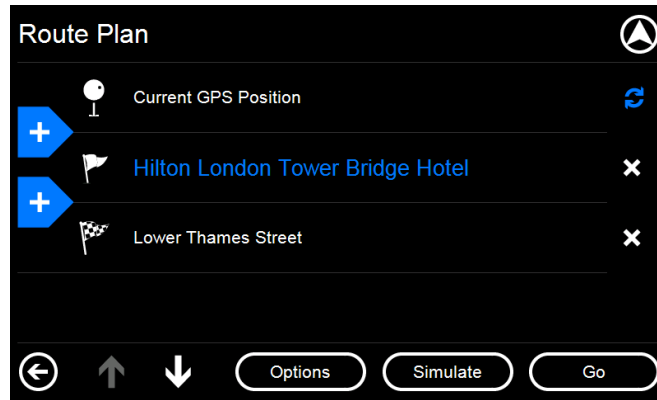
KudosMap7+ has three navigation modes as below:

Route Navigation: Real-time navigation among start, waypoint and destination, when GPS position is present.

Simulate Navigation: Lifelike simulation of the routing among start, waypoint and destination. It enables you to check POI or route information along the route. Simulate mode is mostly used when no GPS position is present.

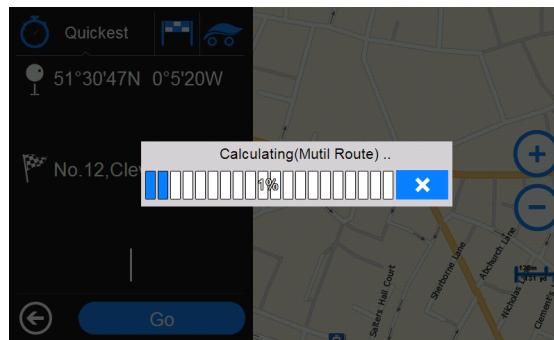
Free Navigation: Real-time navigation without destination when GPS position is present.


In the "Route Plan" screen you can select between two modes: Route Navi (Navigation) or Simulate.



Route Navigation mode:

Touch “Go” means you select route navigation mode. And the system will automatically enter “Route Calculating” screen and wait for GPS signal.



Before route calculation finishes, you can touch the  button at any time to end the operation.

Simulate Navigation mode:

Touch “Simulate” means you select simulate navigation mode. After route calculation and when GPS position has been fixed, the system will begin navigating.

5. Navigation

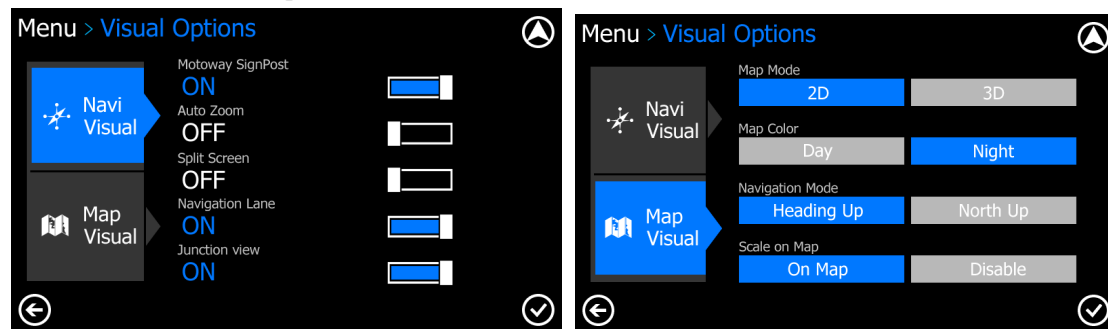
After selecting destination and planning route, the system calculates the optimized route and starts navigation.

All the information you need for driving is provided clearly and comprehensively in the Route Navi Map, please refer to Chapter 2.3. Meanwhile, you can set additional navigation settings or do other possible navigation operations on Route Navi Menu.

On “Route Navi Map” screen, touch Main menu to enter Route Navi Menu.

5.1 Visual Options

You can access Visual Options both from Free Navi Menu and Route Navi Menu.



KudosMap7+ Visual Options includes Navi Visual and Map Visual.

5.1.1 Navi Visual

Motorway Signpost: Turn on/off the function to display **Motorway signpost** on map.

Auto Zoom: Turn on/off the function to adjust the map scale automatically according to driving speed and provides you a better view of the map.

Split Screen: Turn on/off the function to display **Split Screen** on map.

Navigation Lane: Turn on/off the function to display **Navigation Lane** on map.

Junction View: Turn on/off the function to display **Junction View** on map.

5.1.2 Map Visual

Map Mode: Switch the map between 2D and 3D mode.

Map Color: Switch the map background between day and night modes.

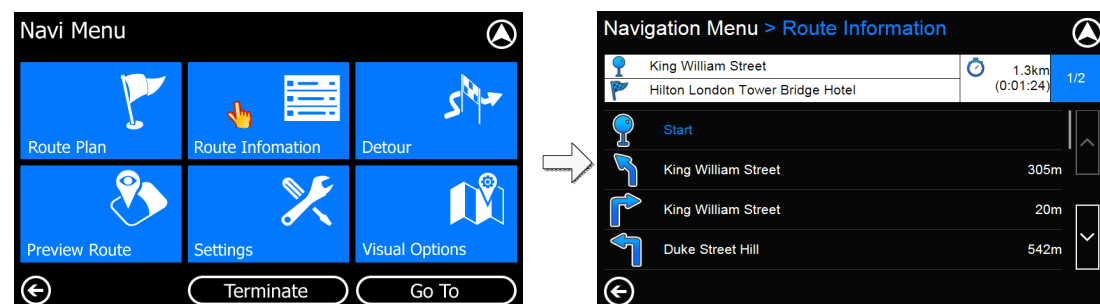
Navigation Mode:

- “Heading Up”:** Rotate map according to the direction of movement.
- “North Up”:** Map is fixed to keep facing North and allows you to view driving conditions ahead.

Scale on map: On Map displays scale on the map, Disable vice versa.

5.2 Route Information

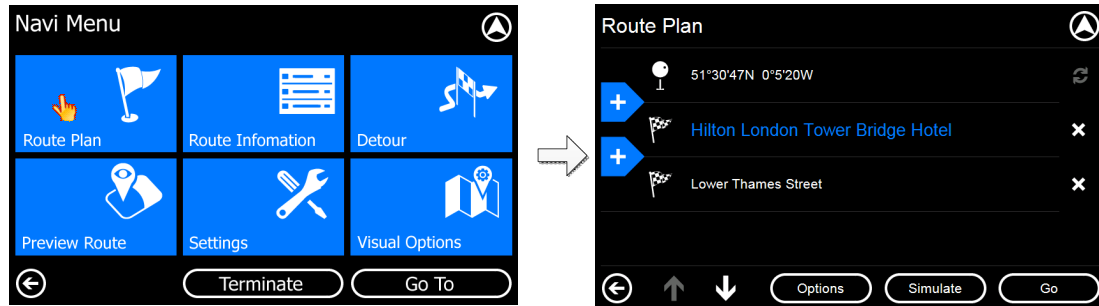
In the “Route Navi Menu” screen, touch “Route Information” to display the entire route in text.



Route Information includes: Start, waypoints, Routing style, Destination, distance, next street name, distance between two turns, and turn type.

5.3 Route Plan

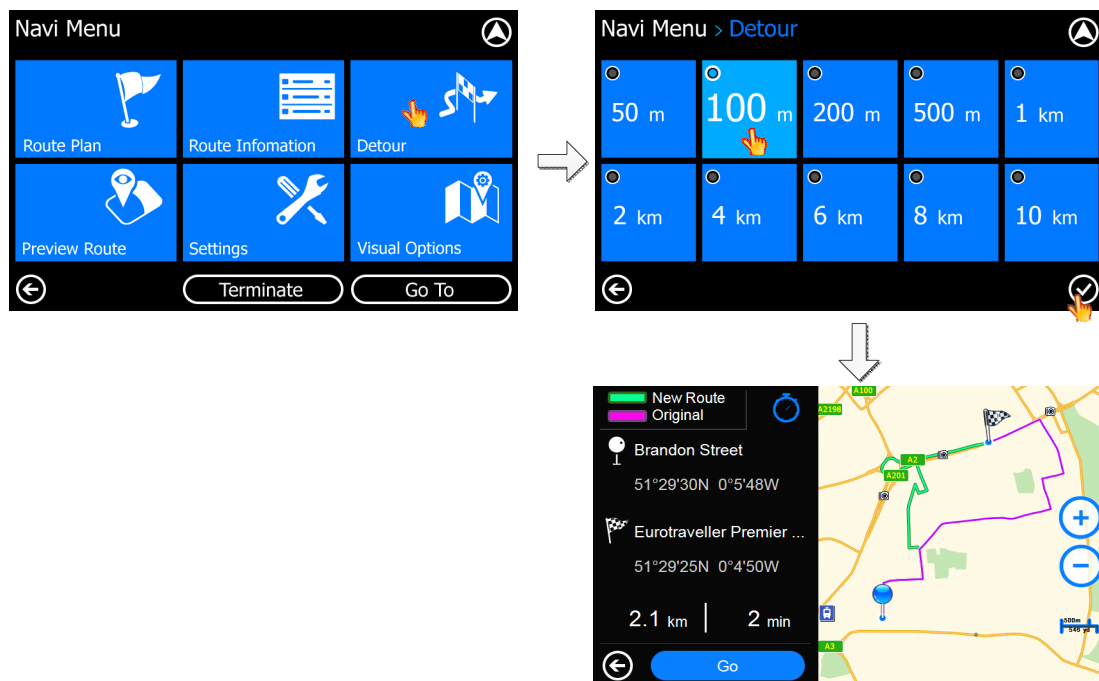
KudosMap7+ enables you to change destination or add more destinations during navigation.



Touch *Route Plan* on “*Route Navi Menu*” screen. Please refer to Chapter 4 for details.

5.4 Detour

In the “*Route Navi Menu*” screen, touch “*Detour*” to enter the “*Detour*” screen .When there is a traffic jam, you can estimate the distance to the blocking point and select an appropriate detour, KudosMap7+ will calculate a detouring route.





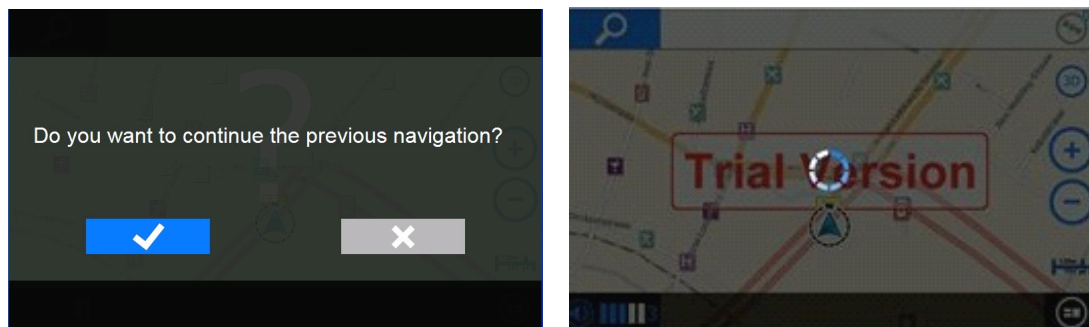
The Magenta line represents the original route and the light green line represents the new route after detour.



5.5 Terminate

By touching the button “Terminate”, the system will stop navigation and enter Free Navigation Map.

5.6 Continue last navigation

If the last navigation is not finished, turn off the navigation device, the system will automatically save work in progress navigation route. After you turn navigation software will be asked whether to continue on the navigation, click "  " into the map interface, click "  " will be more than a destination for the end of the current vehicle location as a starting point, again navigation.



If the user does not select "  " or "  " after a certain time, the navigation software will automatically enter the map interface.

5.7 Auto-routing

With the consideration of driving safely, KudosMap7+ provides the auto-routing function that works under two circumstances:

Auto starting navigation: After setting up a destination, touch “Go” in the “Route Plan” screen and KudosMap7+ will automatically start the navigation. Below we will describe the procedure:

1. Proceed to the next step if GPS signals are received. Otherwise, wait for receiving GPS signals;
2. Set the current GPS position as starting point, use the optimal route and start navigation.

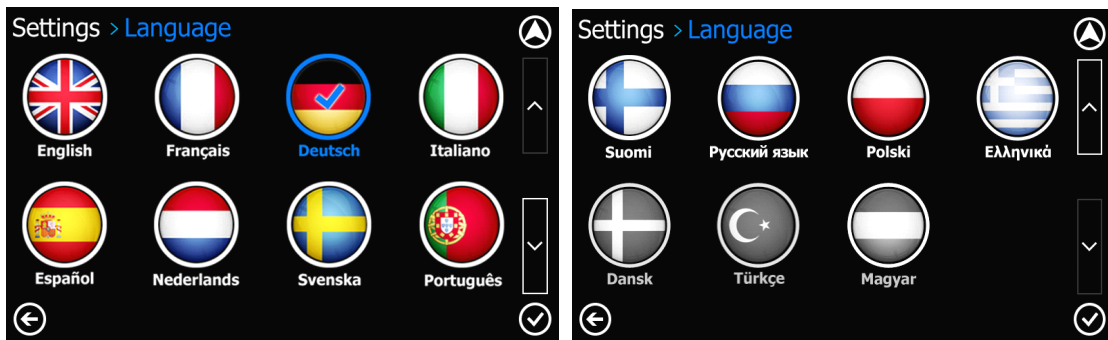
Auto re-routing: If you have accidentally missed a recommended turning point about 100 meters, KudosMap7+ will activate re-routing module to calculate a new route. This guarantees you will never get lost.


6. Settings

There are 10 setting items can be accessed from “Settings” screen in Free Navi Menu or Route Navi Menu.



6.1 Language



You can select voice/program language by touching the language icon. There are 12 languages as in setting language screen. Touch  and return to Settings.



Dansk : Blue highlight button means the language is selected.



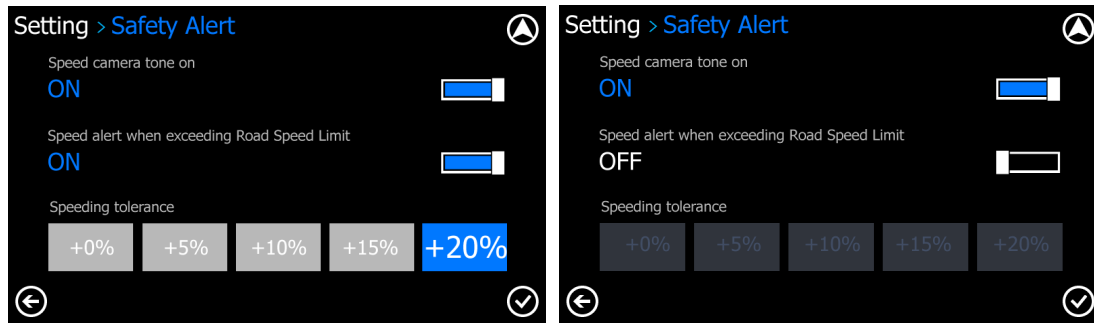
Magyar : Gray button means disable the language.

6.2 Safety Alert

Speeding Alert warns you when you exceed the local road speed limit. This setting allows you to decide whether you want to receive speeding alert or not.

Users can also decide whether they need the sound remind of speed camera by turn on or off the speed camera tone.

Touch *"Safety Alert"* in the *"Settings"* screen to enter the *"Safety Alert"* screen



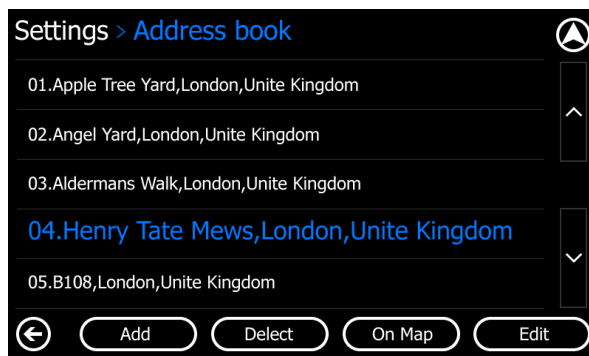
When speeding alert turns on, you can set speeding tolerance value among 0%, 5%, 10%, 15% and 20%.


6.3 Set home


Touch *"Set Home Address"* and enter *"Search Menu"* screen, more operation steps please refer to chapter 3.


6.4 Address Book


KudosMap7+ can save up to 500 Addresses/POIs.

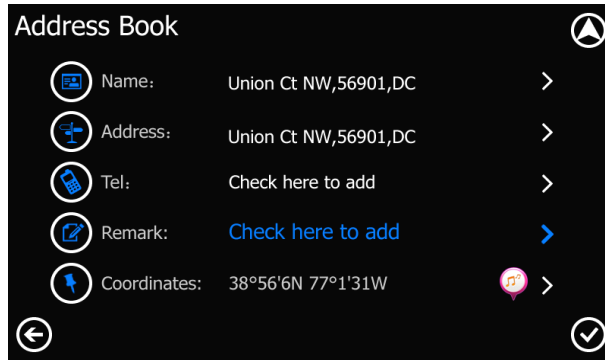


Touch  to enter *"Search Menu"* to search/add address/POI to Address Book.

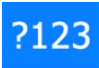
Touch  to delete one record in Address Book.

Touch  to view the address location on map.

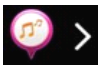
Touch  to enter *"Address Book Edit"* screen.

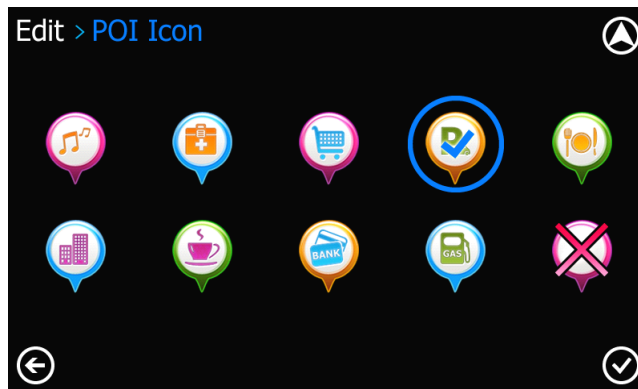


Touch the field you want to edit, and touch the keyboard after the cursor jump to the field. You can

touch  to switch input format.

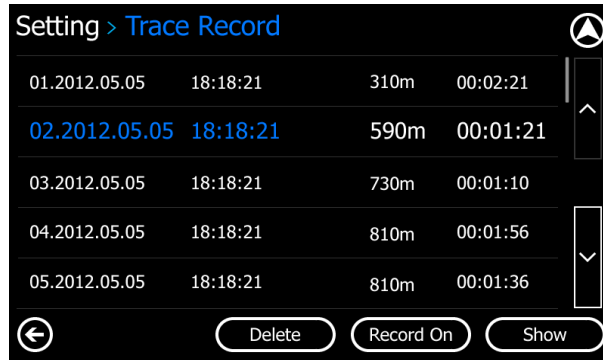


Touch  on to enter "POI Icon Selection" screen. When you approach the POI in address book, system will beep to remind you.




6.5 Trace Record

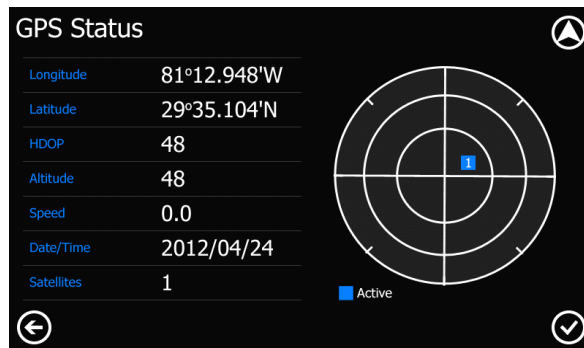
KudosMap7+ logs all positioning information received from GPS receiver during navigation. It draws a trail of the track on map, which enables you to review the historical track information when you re-launch navigation system next time. This function is very useful when you drive in rural areas such as deserts or forests.



By touching **Record On**, users switch on trace record function; while touching “Record off” button, users close trace record function. All trace records will be displayed on screen. If you select one record and touch **Show**, it will display an orange line that is your selected trace record on map. Select one record and touch **Delete**, you could delete the selected record.

6.6 GPS Status

In the “Settings” screen, touch “GPS Status” to display the “GPS Status” screen. You also could touch  on “Route Navi Map” or “Free Navi Map” to access GPS Status.



In the “GPS Status” screen, you can get below information:

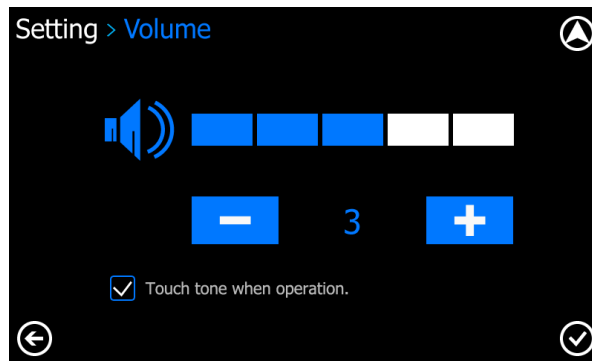
1. **The GPS be active:** GPS has fixed current position.
The GPS be inactive: GPS does not fix a position.
2. **The position of satellites:** The relative orientation of satellites to current position fix.



Positioning information:



1. **Date:** The date of a fixed GPS position, e.g. 2012/04/24.
2. **Time:** The time (always shown as GMT) of a GPS position fix, e.g. 14:03:37.
3. **Vehicle speed:** The speed of a GPS position fix.
4. **Altitude:** The altitude of a GPS position fix.
5. **HDOP:** Horizontal Dilution of Precision.
6. **Satellites:** The numbers of available satellites for positioning.
7. **Longitude:** The longitude of a GPS-fixed position, e.g. 121°27'1E
8. **Latitude:** The latitude of a GPS-fixed position, e.g. 31°16'44S.

6.7 Volume

Users can set the volume of voice guidance and select touch tone when operation.



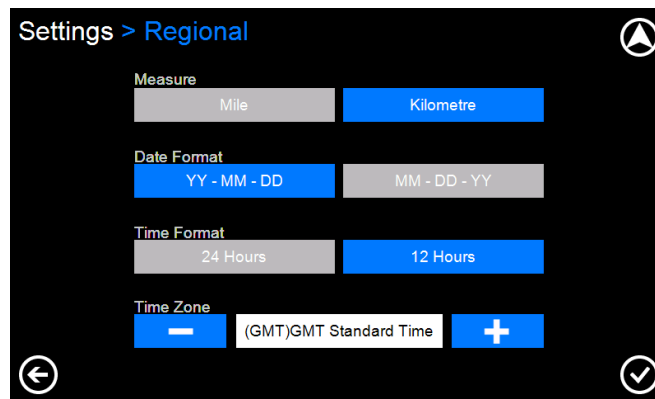
Touch  to adjust volume to lower while touch  to make volume be louder.

Touch  to make the system be mute. Once you have configured the settings, touch  and the system will save your settings and return to the “Settings” screen.

Mark “Touch tone when operation” means there is touch tone in operation.

6.8 Regional

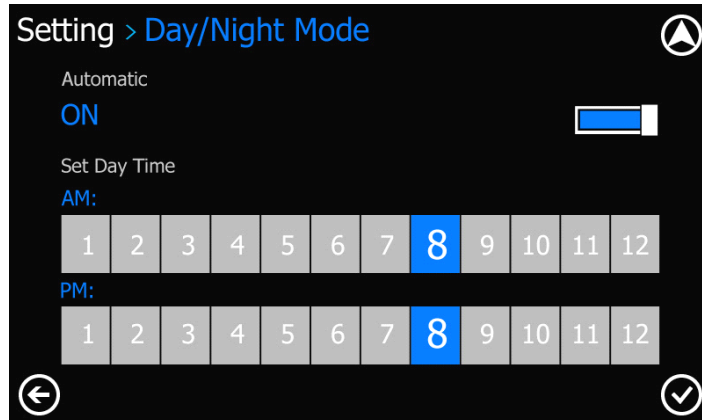
Users can set measure unit, time format, date format and time zone in “Regional” screen.



Touch  or  to set the desired time zone.

6.9 Day/Night Mode

Users can set day/night mode and day time.



System will automatically store the last defined day time.

6.10 Demo

TurboDog7 + supports the following four Demo function demonstrates: Junction View, Split Screen, Motorway SignPost, Navigation Lane.

6.11 About

“About” screen provides KudosMap7+ basic system information, which is useful for software upgrade or device maintenance.

7. Appendix

7.1 Attention

It is not a system failure under circumstances listed below:

Situations that can affect the GPS positioning:

- Sometimes, when you are driving on the Motorway/viaduct, the floating point swings.
- When you are driving on a very steep road.
- When you are driving on spiral road, you will find that the floating point swings. It is nothing to do with the radius of the road and the driving speed of your vehicle. One reason might be that the real road condition may differ from the information of the electronic map.
- When you make a right/left turn to enter a road and that has parallel roads nearby (less than 50m distance), you might find that the floating point may go to another road.
- When driving on a wide road in a snaky line, you may experience that the floating point may swing due to the mismatch of real distance.
- Before returning to a ground road after you have been driving in an underground car

park or a spiral path of the multi-level car park, you will find that the floating point may swing. When your car is in a rotary elevator, the arrow of the floating point may not point to the right direction.

- Providing voice prompt at a branching path ahead.
- The guided distance may deviate from the actual distance rate.

When any of those situations occurs, the GPS satellite will automatically adjust the current position fix if you keep driving.

Problems caused by map files:

- When you return from a road which is newly constructed to a road recorded in map file, you may find floating point swings because the map file may not reflect the real road conditions. After you keep driving for a while, the system will adjust it to the right position using GPS signal information
- No through way due to road closure or pedestrian path
- Open of a new road and closure of old road;
- Guide to a no-through way;
- Route re-computed again without changing the proposed route;
- Guide to a normal road instead of a viaduct, or vice versa;
- If there are only small lanes without a normal road near the destination, the system will only guide you to a place near to your destination;
- Instruct you to make a U-turn;
- No indication at a branching road;
- Turning instruction mismatch the real road condition;
- No indication of direction or voice prompt about entrance/exit while guiding on Motorway/express way;
- Schematic map may mismatch real road conditions.

Places having difficulties to receive GSP signals

- In tunnels;
- Between high buildings;
- Under viaducts;
- In trees/forests;

When using external GPS antenna, we recommend that you place it on the roof of the car. If there is rack on the roof of your car, please make sure to separate the rack and the antenna.

GPS is managed by the department of defense of USA. It may purposely reduce the accuracy of the GPS signals so that the car may swing.

Use Notice

- The floating point may swing before the GPS signal is received when you turn the power on.
- The floating point may swing when you use the system at the first time after installation.

The system will automatically adjust its position and direction using GPS signals when the floating point mismatches real condition.

7.2 POI Icons

KudosMap7+ POI Category:

Icon	Name	Icon	Name
	Accommodation		Airport
	Automotive		Business
	Center of Settlement		All category POI
	Finance		Government
	Medical		Museum
	Musical Center		Nightlife
	Parking		Petrol Station
	Police Station		Railway Station
	Recreation		Restaurant
	Service		Shopping
	Sight		Zoo

7.3 Copyright notices

Great care was taken in preparing this manual. Constant product development may mean that some information is not entirely up to date. The information in this document is subject to change without notice.

Kudos shall not be liable for technical or editorial errors or omissions contained herein; nor for incidental or consequential damages resulting from the performance or use of this material. This document contains information protected by copyright. No part of this document may be photocopied or reproduced in any form without prior written consent from Kudos.

Software:KudosMap

Data Source: Map data NAVTEQ 2013Q1. All rights reserved.